

Foster Milano Rangetop 5 Plate Induction



Rangetop

Code: 3170 900

AISI 304 Stainless steel
Satin finish
9 settings plus Powerboost
5 slider commands
Overflow detection
Security lock



DETAILS

Series	Foster Milano
Finish	Foster brushed
Material	AISI 304 stainless steel
Texture	Satin
Dimensions	47 ⁷ / ₈ " x 27 "

Induction cooker hob:

9 Power settings per zone +
Powerboost

Bridge function

5 slider commands

T-chef function

Heating element

Five zones

Delay off timer

Pause and Recall

Light switch

Independent timer

Extractable oil collector

Security lock

Air Outlet

Residual heat light

Overflow detection

Power

Power 1,900-2,200 W (3,400-3,900 Booster)

4 Zones size 7×8"

Power 2.400-2.800 W (5.000-5.800 Booster)

1 Zone size 7×10"

Electrical supply

208-240V – 50/60 Hz

Optional accessories

8210 008 Induction Pro Pot Set

FEATURES

Powerboost

Booster function provides increased power to the selected plate. In particular, when the Booster is activated, the plate works for ten minutes at a very high power that allows to heat quickly large quantities of water.

Slider commands

The Slider control allows for extremely quick temperature setting: with a light touch of the finger you may select the desired power level on the TOUCH display.

Bridge zone

The new hobs with Bridge function allow to associate two zones forming a single extended cooking zone for pots of large size, or for more than one cooking simultaneously, with maximum flexibility in pot positioning. With the additional Double Booster feature provided by all Bridge hobs, the exceptional 3700 W power can be concentrated on a single plate or made available uniformly over the enlarged area.

Heat maintenance

Function that allows the food to be kept warm gently (70° C), without reaching boiling temperatures or risking to burn the sauce.

Pause

Useful function that allows you to distract your attention from cooking, interrupting and restoring the settings immediately.

Recall

This feature allows you to call back the last settings selected in the previous cooking.

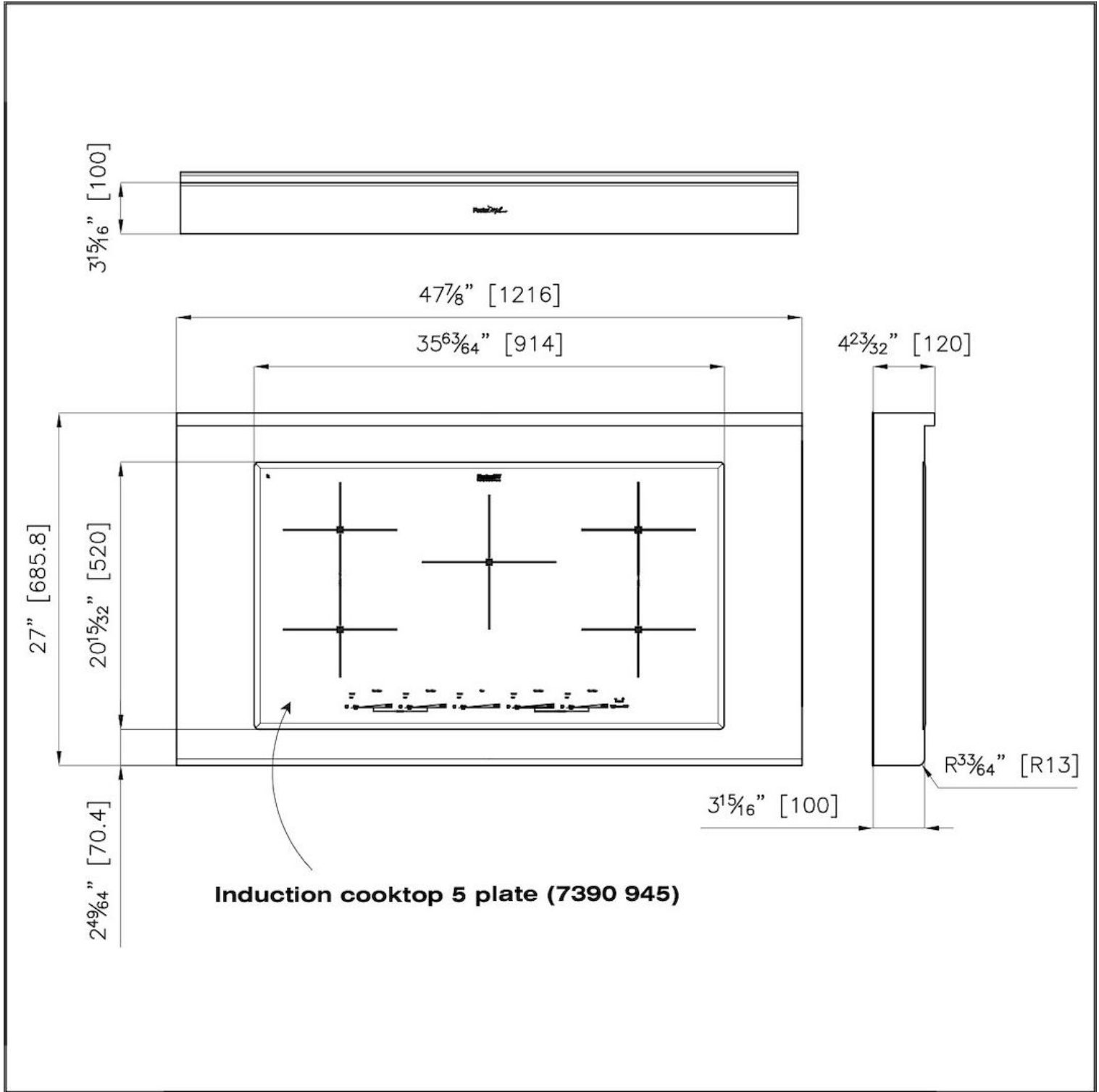
Timer

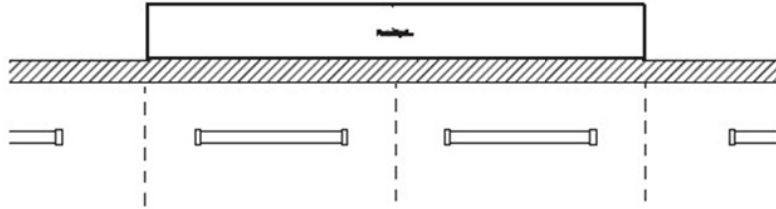
Independent timer from the end-of-cooking function.

Safety

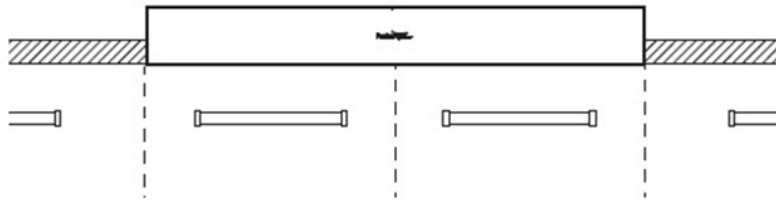
All electric cooker hobs feature the most modern and sophisticated safety protections: Centralised power-off function; Child-proof safety lock; Residual heat warning lights. Induction models feature the following functions: Safety System that turn off the hob in the absence of the pot; Overflow detector that automatically turns off the plate in case of liquid overflow; Automatic deactivation to prevent accidents caused by forgetfulness.

TECHNICAL DATA

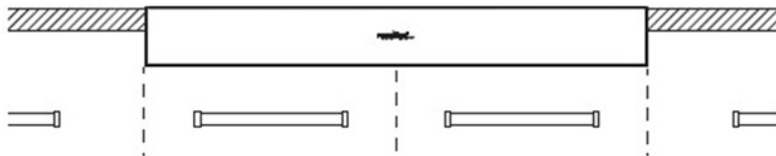




1. Sit-up installation on the worktop

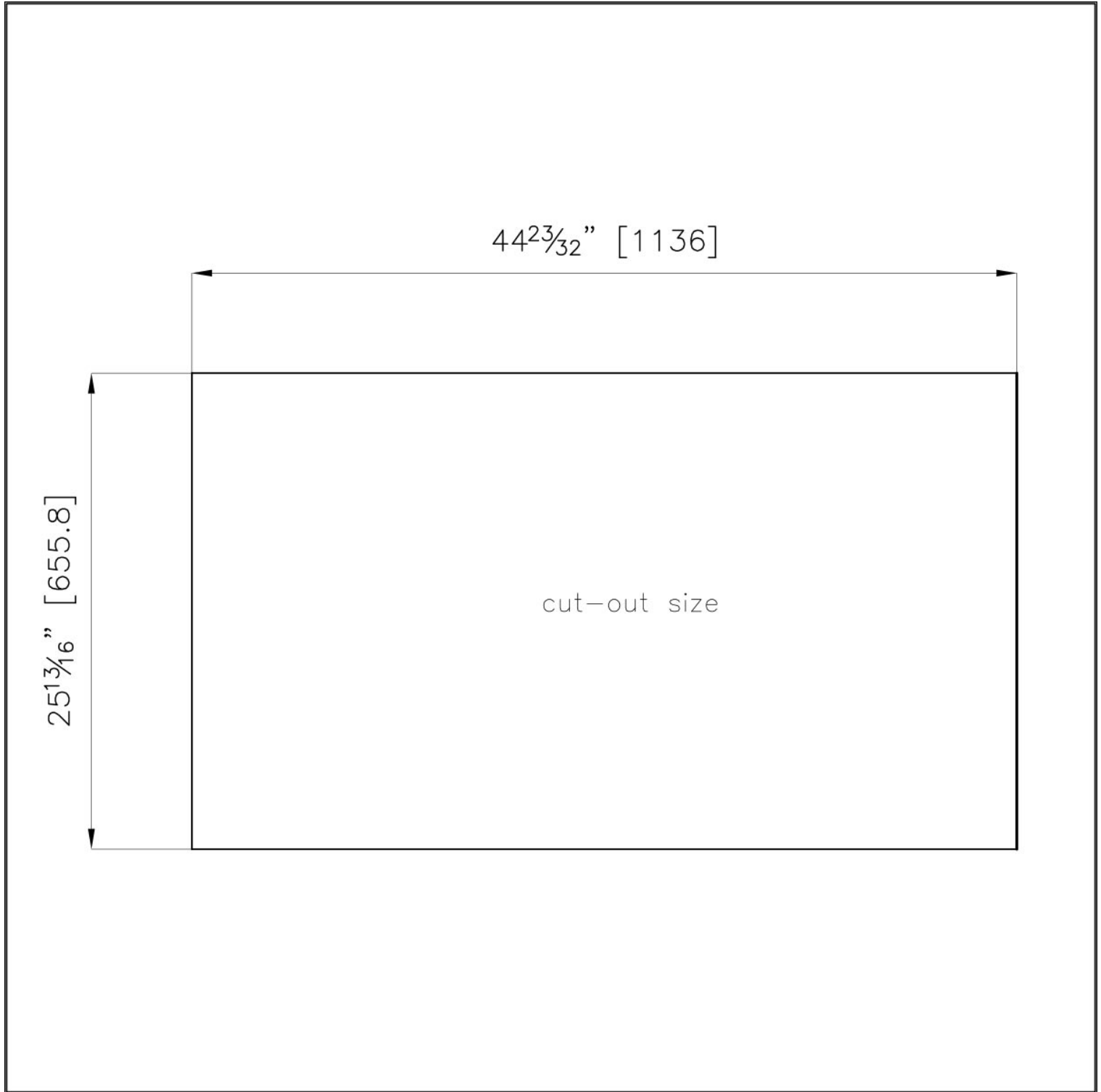


2. Sit-up installation on the cabinets and protruding over the worktop



3. Built-in installation flush with the worktop





GALLERY



OPTIONAL ACCESSORIES



Induction Pro - Cookware set -
8pcs

RECOMMENDED PAIRINGS



Cucinotta Hood 48"



Foster Milano Wash Station



Sink Leonardo 40" x 20" – U/M